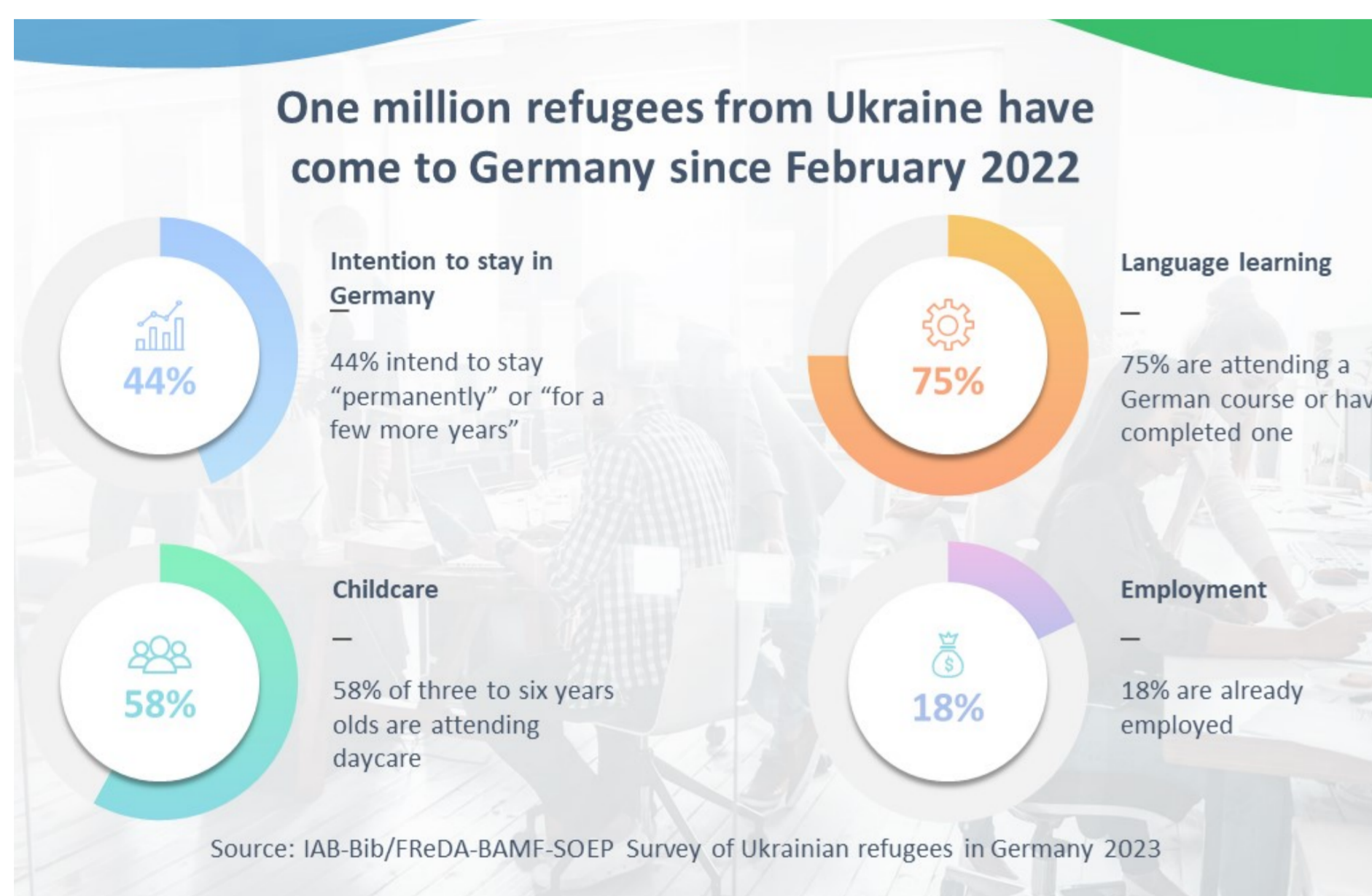


UKRAINIAN REFUGEES IN ALTENBURGER LAND

Research on integration conditions and intentions to stay

UKRAINIAN REFUGEES IN GERMANY



UKRAINIANS AND OTHER REFUGEE WAVES

How is the integration system for Ukrainians different?

- No Asylverfahren, directly Arbeitserlaubnis: direct access to (self-)employment and education
- The integration system with common points of reference is prepared better than in 2015, but transferability of programs is limited under federal states differences

Who are Ukrainian refugees?

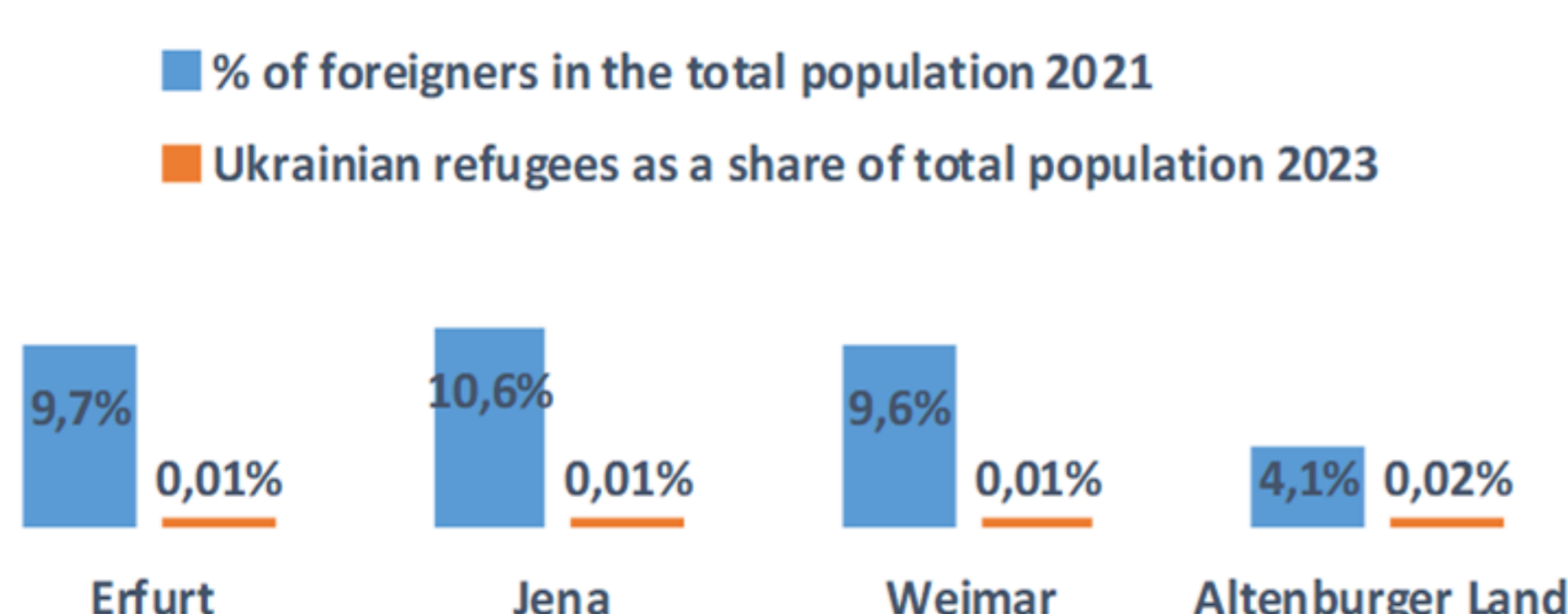
- Dominant majority are women who arrived without partner and/or with child(ren)
- Chronicles of war in different regions of Ukraine as important identity and decision dimensions
- Identity consciousness, nation building and patriotism are emphasized
- Rebuilding Ukraine after the war as a contra-argument to integration

Are the problems of earlier refugee waves relevant?

- Gender problematics as single motherhood, so childcare facilities, part-time solutions, alternative supporting offers, e.g., Mother-cafes, social media, are needed
- Racism problem is less articulated due to higher cultural proximity to German population, but cultural differences are still problematized as the time goes on
- Established middle class in home country?

UKRAINIAN REFUGEES IN ALTENBURGER LAND

Foreign citizens in Thüringen and Altenburger Land



RESEARCH METHODOLOGY

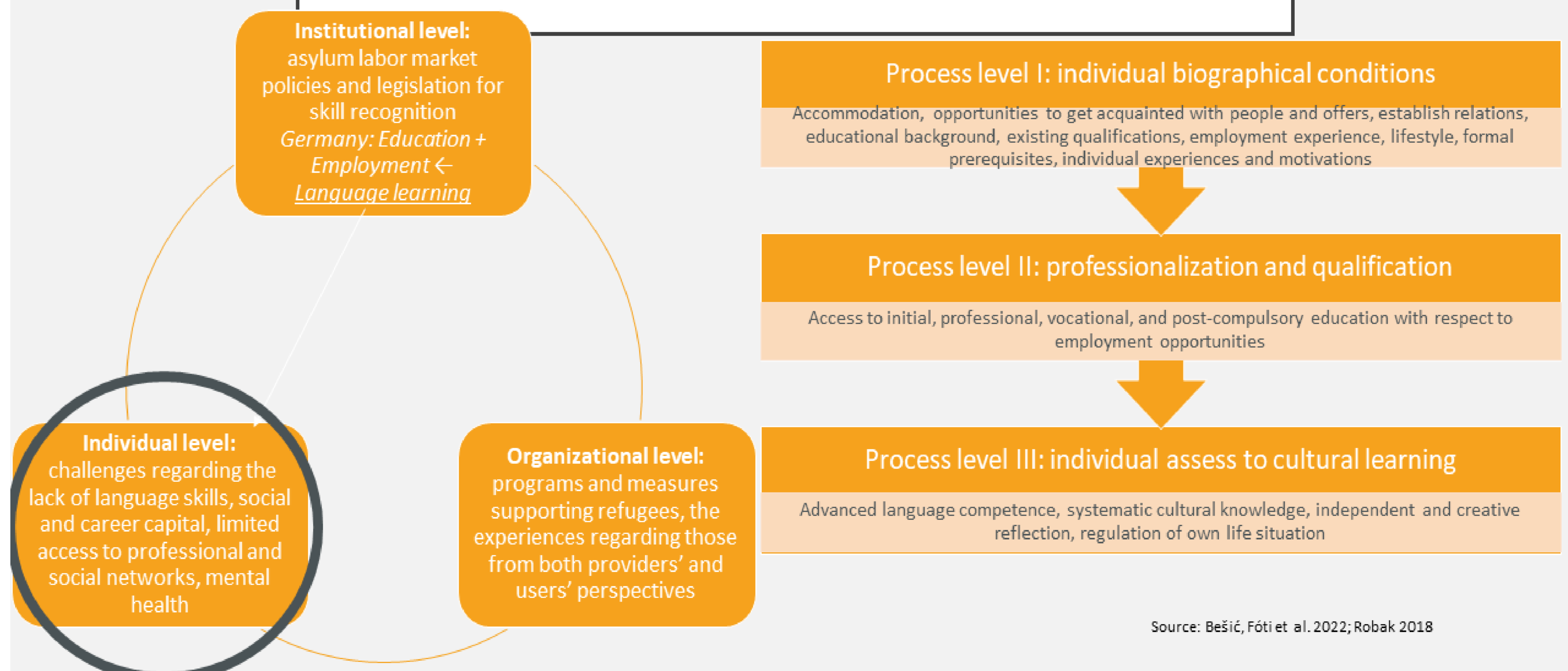
Research objectives

- Studying the individual strengths, resources, and needs of local Ukrainian refugees regarding labor market integration with the focus on intention to remain in Altenburger Land and their contribution to counter the national lack of skilled labor.
- Analyzing the experiences in the regional offer on German general and professional language as well as integration courses. With this, multi-perspective approach regarding the reconstruction of reciprocal perception of existing structures by students and providers is realized.
- Constructing an inter-relational perspective of challenges of labor market integration in Altenburger Land to understand their linkages across institutional, organizational, and individual levels.

Data collection

| | Sample 1: Refugees | Sample 2: Organizations working with refugees |
|--|--|--|
| 12 interviews for each sample, 24 in total | Variety of social groups, incl. double mother-child interviews, young men, people from occupied territories | All spheres of refugee work in Altenburger Land |
| Interview guides | <ul style="list-style-type: none"> • Incorporation of suggestions from Arbeitskreis Integration of Altenburger Land • Discussion in Forschungswerkstatt at FSU • 3 pilot interviews for each sample, 6 in total • Face-to-face interviews in Ukrainian/Russian and German <ul style="list-style-type: none"> • Open questions, flexibility • Comparative structure: triangulation | |
| Prior acknowledgements after interviews | <ul style="list-style-type: none"> • Interview often as the first reflection of highly traumatic experiences • Escape experiences as potential explanations for current acting | <ul style="list-style-type: none"> • Deep emotional engagement with work, often overlapping with own private sphere • Possibilities for action often restricted by legislative framework |

RESEARCH DIMENSIONS OF INTEGRATION



PRIOR RESULTS

- Refugees and experts share similar views on the urgency to learn German language, diversity of refugees' motivations to stay in Germany and work, bureaucratic difficulties in the country
- The problems of xenophobia and racism are mainly emphasized by experts but are not perceived as such by the refugees
- **The intention of Ukrainian refugees to stay in Altenburger Land/Germany is mainly explained by the factors settled in Ukraine, e.g. separation from partner and relatives, safety in the place of residence, possibility to return to Ukraine legally etc., whereas the experts can only act upon factors settled in Germany, e.g., employment, accommodation, medicine etc., which play a minor role in the final decision-making.**

FOLLOW-UP INITIATIVES

Course „Erwachsenenbildung und Migration“ at FSU

- October 2023-February 2024
- Student research projects in the region
- Master Erziehungswissenschaft - Sozialpädagogik/ Sozialmanagement

Conference Gender und Flucht: Welche Bedeutung hat das Geschlecht für die Fluchterfahrung?

- February, 16, 2024
- Funding by FSU
- Nationwide call for papers on refugee research in Germany with the publication of conference proceedings



FRIEDRICH-SCHILLER-UNIVERSITÄT JENA